

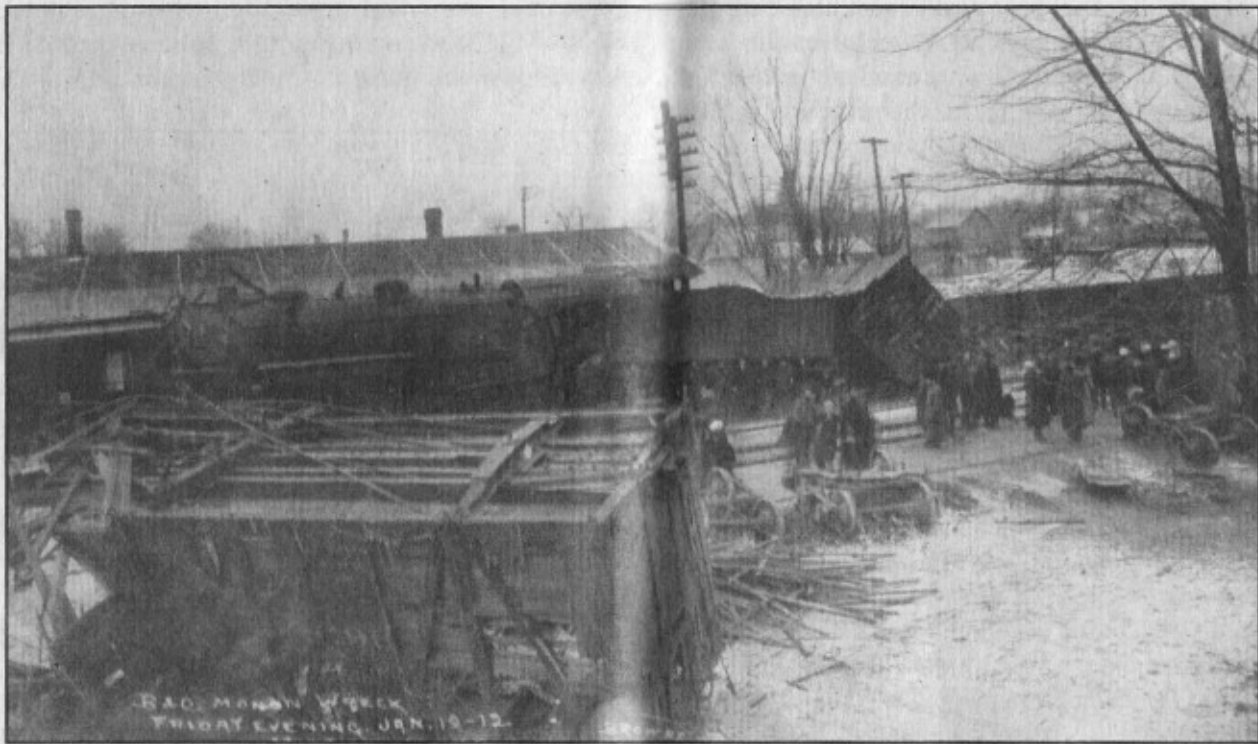
B & O and Monon freights collide

From the January 25, 1912 issue
of *The Mitchell Commercial*:

“Probably the worst wreck in the history of railroading in Mitchell, and at the same time the most fortunate wreck in that no one was hurt, occurred about 7 o’clock Friday evening (January 19, 1912) and as a result about \$5,000 worth of prop-

erty was destroyed and traffic on the Monon and B&O systems was at a standstill for about eight hours.

“Monon Q.D. freight No. 71 was passing over the crossing going south when B & O freight No. 88, also Q.D., came in from the west. Coming in from the west is considerably down grade and B & O engineer C. C. Trueblood tried his air



This is the scene of the B & O and Monon wreck in Mitchell on January 19, 1912. Notice the engine has cut into the eave of the depot.

brake but it would not work. He saw they were going to get together and he and his fireman, also the head brakeman, jumped off about half a block west of the crossing. The B & O engine ploughed through the Monon train cutting it in two. The momentum of the cars on the north kept crowding the engine until it left the track, climbed on the brick platform and stopped just outside the bay window in the telegraph office, shearing off the eave of the depot and spreading four box cars and one coal car out over the right of way.